

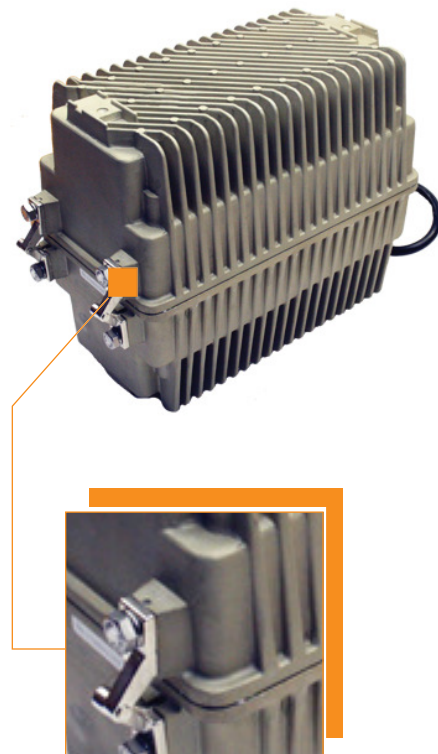
# FERRORESONANT [PSS-xxW-xx-x]

Cable Products, Power Supplies

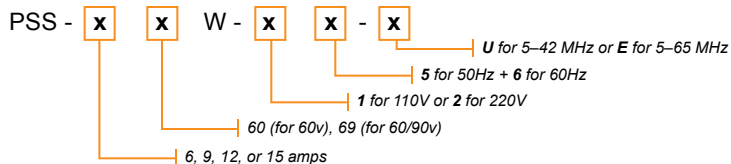


## Features

- Suitable for use in areas where standby reserve power is not a requirement.
- 60 VAC Quasi-Square wave reduces an amplifier's ripple rating and improves power transmission distance.
- Possesses an auto stability function and accepts input variation range in  $\pm 15\%$ . The output regulation is at  $\pm 2\%$ .
- During a short, the Ferroresonant transformer folds back; limited @150% of the output rating, thereby preventing the transformer from being damaged.
- During an overload, the output voltage is lowered.
- An auto reset function is built in for instances when there is a short or overload.
- Built in delayed circuit; to protect the device from any input surges and minimizes the potential impacts of a power failure.
- Built in surge protection circuit that shunts any high voltage spike on the output to ground.
- LED indicator light during normal operation.
- Ideal for strand mounting



## Ordering Information



Model Number	Standard Carton	Dimensions		Carton Weight	
PSS-xxW-xx-x	1 pc	28 x 16 x 22 cm / 11 x 6.3 x 8.6 in		18 kgs / 40 lbs	
Features	PSS-660W-xx-x	PSS-960W-xx-x	PSS-1260W-xx-x	PSS-1560W-xx-x	PSS-1569W-xx-x
Output Power	360 W	540 W	720 W	900 W	900 W
Output Current	6 A	9 A	12 A	15 A	15 A / 10 A
Output Voltage	60 V, 2% at full load				60 V / 90 V
Output Waveform	Quasi-square wave				
Input Power Supply	110 V $\pm$ 15% (or 220V $\pm$ 15%)				
Input Frequency	50 /60 Hz				
Protection	Short Circuit Protection // Overload Current Limit // Start-up Output Delay // Output Surge Protection				
Operating Temperature	-40°C ~ 55°C				