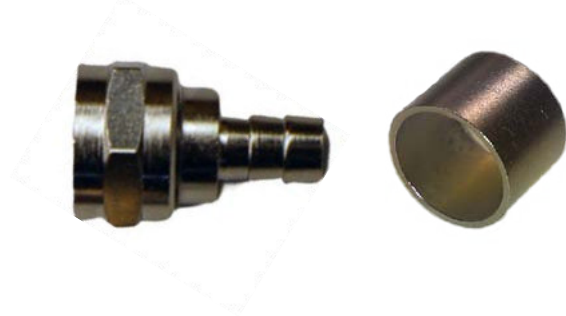


F56-x

- Standard Quantity: 100 pcs



Information

- Brass Tin Plating
- F56-1/4" with 1/4" Ring
- Inner Diameter: 5.8 mm (0.228 in.)
- Outer Diameter: 9.1 mm (0.358 in.)
- For use with RG6 Cable

F56CG

- Standard Quantity: 100 pcs



Information

- Brass Tin Plating
- Connector with Annealed Ring
- Inner Diameter: 9.40 mm (0.370 in.)
- Outer Diameter: 9.48 mm (0.373 in.)
- For use with RG6 Cable

F56CGA

- Standard Quantity: 100 pcs

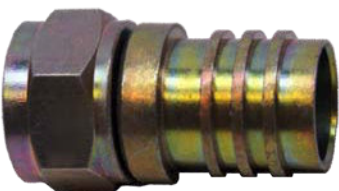


Information

- F56 Smooth Circular Crimp
- Inner Diameter: 9.40 mm (0.370 in.)
- Outer Diameter: 9.48 mm (0.373 in.)
- For use with RG6 Cable

F56CGO

- Standard Quantity: 100 pcs

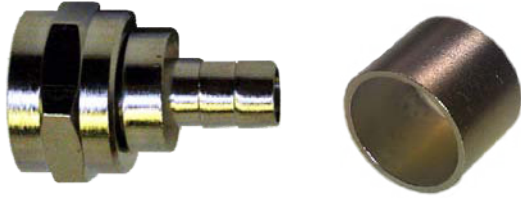


Information

- Brass Gold Cadmium Plating
- Connector with Annealed Ring
- Inner Diameter: 9.40 mm (0.370 in.)
- Outer Diameter: 9.48 mm (0.373 in.)
- For use with RG6 Cable

F59-

- Standard Quantity: 100 pcs

**Information**

- F59 Connector
- F59-1/4" with 1/4" Ring
- Inner Diameter: 4.55 mm (0.179 in.)
- Outer Diameter: 8.45 mm (0.333 in.)
- For use with RG59 Cable

F59CGA

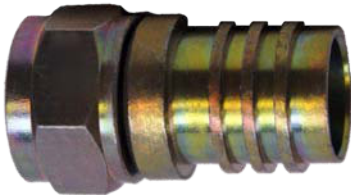
- Standard Quantity: 100 pcs

**Information**

- Connector with Annealed Ring
- Inner Diameter: 8.65 mm (0.340 in.)
- Outer Diameter: 9.48 mm (0.373 in.)
- F59 Smooth Circular Crimp
- For use with RG59 Cable

F59CGO

- Standard Quantity: 100 pcs

**Information**

- Connector with Annealed Ring
- Added O-Ring for Waterproofing
- Inner Diameter: 8.65 mm (0.340 in.)
- Outer Diameter: 9.48 mm (0.373 in.)
- For use with RG59 Cable

F59PT

- Standard Quantity: 100 pcs

**Information**

- Female-Male Push on Adapter
- For use with RG59 Cable

F59P

- Standard Quantity: 100 pcs

**Information**

- Male Push on Adaptor
- For use with RG59 Cable

CF6

- Standard Quantity: 100 pcs



Information

- Compression Connector
- Free Spinning Nut, 11 mm
- Standard Tool: Ripley, Cable Prep
Sargent and Lemco Tools
- RG6 Series Compatible

FT75

- Standard Quantity: 100 pcs



Information

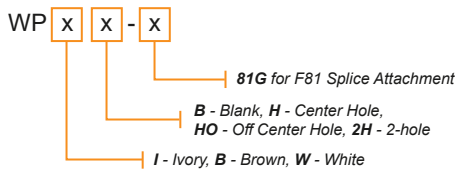
- 75 Ohm Terminator
- Nickel Plated Solid Brass
- Carbon Film Resistor
- Tolerance: 2%, 1/8 W
- Return Loss: 25 dB

Features

- Available in White, Ivory, or Brown Color Versions
- SCTE Compliant Premium F81 Connector
- Available with Center Hole, Off Center Hole, 2 Hole or No Hole Versions
- High-impact ABS Plastic Mounting Bracket
- Includes Two Painted Mounting Screws



Ordering Information



	WPxx	WPxx-81G
Inner Box	100 pcs	50 pcs
Standard Carton	1000 pcs	500 pcs
Carton Weight	24 kg / 53 lb	15 kg / 33 lb

Regular Wall Plates

"B" No hole	"H" Center hole
WPIB: Ivory	WPIH: Ivory
WPBB: Brown	WPBH: Brown
WPWB: White	WPWH: White

"O" Off-center hole	"2H" 2-hole
WPIHO: Ivory	WPI2H: Ivory
WPBHO: Brown	WPB2H: Brown
WPWHO: White	WPW2H: White

F81 Attached Wall Plates

"B" No hole	"H" Center hole
N/A	WPIH-81G: Ivory
N/A	WPBH-81G: Brown
N/A	WPWH-81H: White

"O" Off-center hole	"2H" 2-hole
WPIHO-81G: Ivory	WPI2H-81G: Ivory
WPBHO-81G: Brown	WPB2H-81G: Brown
WPWHO-81G: White	WPW2H-81G: White

HDMI SWITCH [HDSW-x1]

Cable Products, Hardware

Taikan

ESTD. 1973

Features

- Supports AC-coupled and DC-coupled Inputs
- Supports 8-bit, 10-bit and 12-bit Deep Color/Channel
- Transfers Bit Rates Up to 2.25 Gbps Channel
- Optimized Equalization for Enhanced Signal Integrity
- IR Controlled or Manual Switching
- Senses the Input Source Ports Automatically and Bypasses the Port Without a Signal
- CEC Pass By
- HDCP Compliant

Ordering Information

HDSW- **x** 1

3 or 5 input ports

Electrical Specifications

- 3 x 1 or 5 x 1 HDMI Switch
- Resolution: 1080p/1080i/720p/576p/480p/576i/480i
- Deep Color up to 36-bit
- Transfer Bitrates up to 2.25 Gbps/Channel
- Audio Formats; LPCM, Dolby-AC3, DTS7.1, DSD/Dolby True HD/DTS-HD Master Audio

General Specifications

HDMI Output Cable Distance (If a Longer Cable is Required, an Amplifier is Needed)	≤ 15 m
Operating Temperature Range	-5 to 55 °C (23 to 131 °F)
Operating Humidity Range	5 to 90% (No Condensation)
Product Dimensions (L x W x H)	117 x 63.5 x 23 mm (4.6 x 2.5 x 0.9 in.)

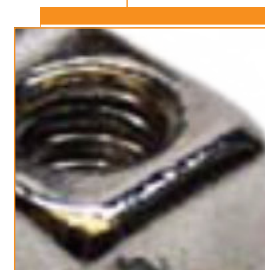
Package Includes

- 1x HDSW-x1
- 1x IR Remote Control
- 1x 5 V Universal Power Supply
- 1x User Manual



Description

Taikan's ground block complies with SCTE standards. With a high return loss and low insertion loss, the ground block maintains a consistently high standard for RF signal transmission. The zinc diecast housing and chromate are designed for corrosion resistance and ensures the product's reliability and longevity.



Features

- SCTE Compliant
- Flat Port Ends (SCTE IPS-SP-400 Compliant)
- Surge Withstand 6kV Combination Wave (IEEE C62.41-1991 Cat. B3)
- High Return Loss and Low Insertion Loss
- Length: 25.40 mm (1.0 in.)
- Zinc Die-cast Housing with Chromate Finish for Corrosion Resistance
- Available in a Single or Dual Option
- Includes 2 Mounting Screws and Grounding Wire Screw

Ordering Information

Model Number	Standard Bag Qty	Standard Bag Weight
GB1	100 pcs	3.2 kg / 7 lb
GB2	100 pcs	3.9 kg / 8.5 lb

Insertion Loss

Frequency	(dB)
1-5 MHz	0.08
5-400 MHz	0.07
400-750 MHz	0.07
750-1000 MHz	0.10

Return Loss

Frequency	(dB)
1-5 MHz	39.5
5-400 MHz	18.8
400-750 MHz	14.1
750-1000 MHz	20.6

General Specifications

Nominal Impedance	75 Ohm
F Connector	SCTE IPS-SP-400 Complaint Sealed F-Port
Surge Withstand	6kV Combination Wave (IEEE C62.41-1991 Cat. B3)
Flatness	+/- 0.10 dB
Operating Temperature	-40 °C to +60 °C
RFI Shielding	> 120 dB

WALL PLUG ADAPTERS

[CMPA-x-x] Cable Products, Hardware

Description

Taikan's Wall Plug Adapters provide consistent power to your electronic devices. Available with a variety of output and connector diameter options to suit your customers needs. The Wall Plug Adapters come with a standard 1.5 meter cord.



CMPA-A-x



CMPA-B-x

Features

- Universal Input Voltage Range, 100-240 V, 50-60 Hz
- DoE and Ecodesign 2019/1782 Level VI Efficiency
- Variety of Output and Connector Options for Unique Applications
- Variety of Cord Lengths Available*
- Ultra-Compact Case
- Color: Black

Ordering Information

CMPA - **x** - **x**

U: US Power Adapter 110V; E: Europe Power Adapter 220V (Other regions available upon request)

A: 12 V, 2.5 Amp, 2.5 mm Connector

B: 15 V, 1.5 Amp, 1.7 mm Connector

C: 12 V, 1.0 Amp, 2.1 mm Connector



CMPA-C-x

Model Number	Input	Output	Connector Diameter	Dimensions
CMPA-A-x	100 - 240 V, 50 - 60 Hz	12 V, 2.5 A	2.5 mm	5.5 x 2.5 x 10 mm
CMPA-B-x	100 - 240 V, 50 - 60 Hz	15 V, 1.5 A	1.7 mm	4.75 x 1.7 x 10 mm
CMPA-C-x	100 - 240 V, 50 - 60 Hz	12 V, 1.0 A	2.1 mm	5.5 x 2.1 x 10 mm

*Cord Length Standard is set at 1.5 m but is customizable